
What Do My PSAT Scores Mean?

(and what about this alphabet soup?)

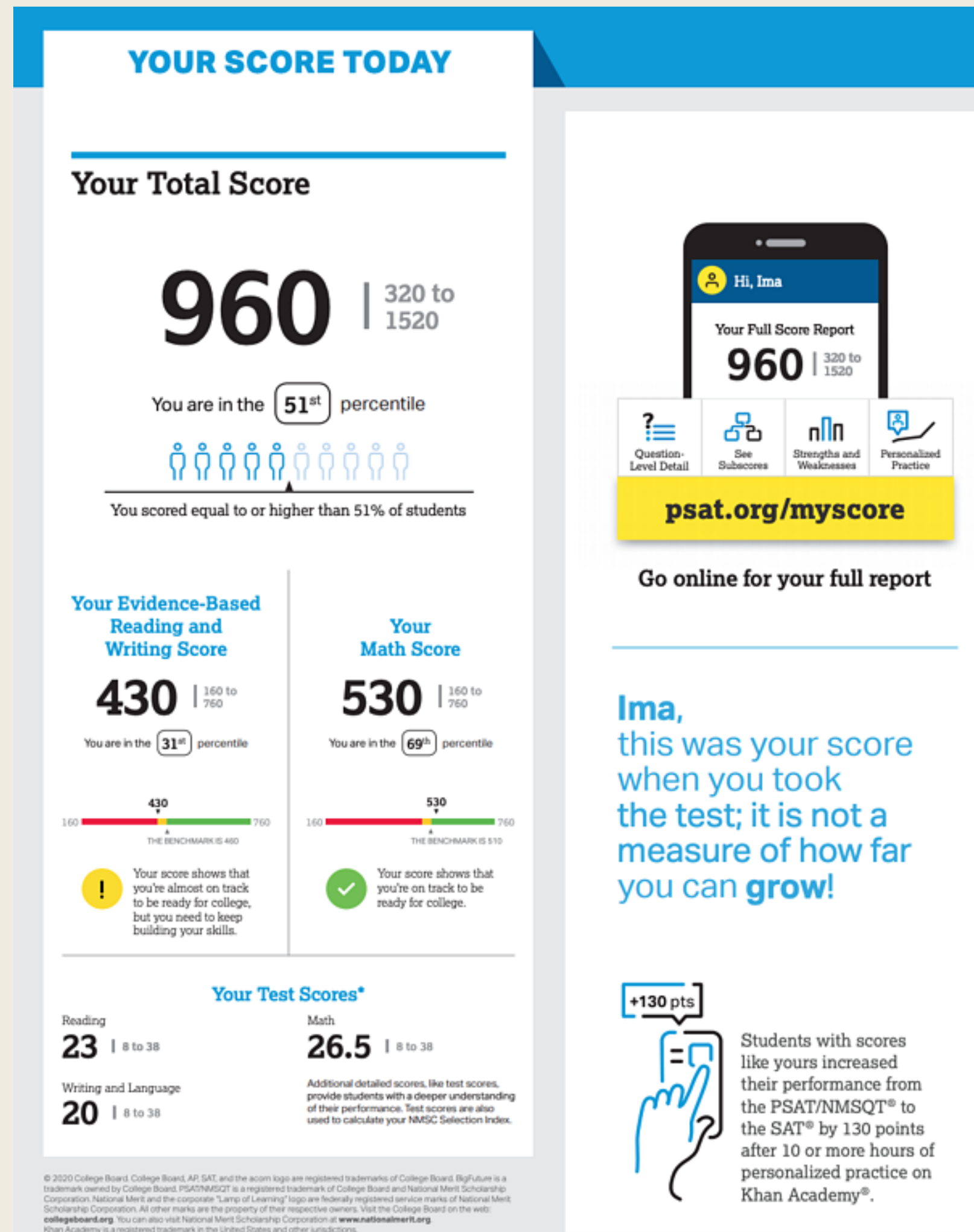


**Woodlands
Test Prep**

What Do My PSAT Scores Mean?

- PSAT Score Report – What do these numbers mean?
- SAT vs. ACT – Which one should I take? When?
- How do I get ready for these tests?

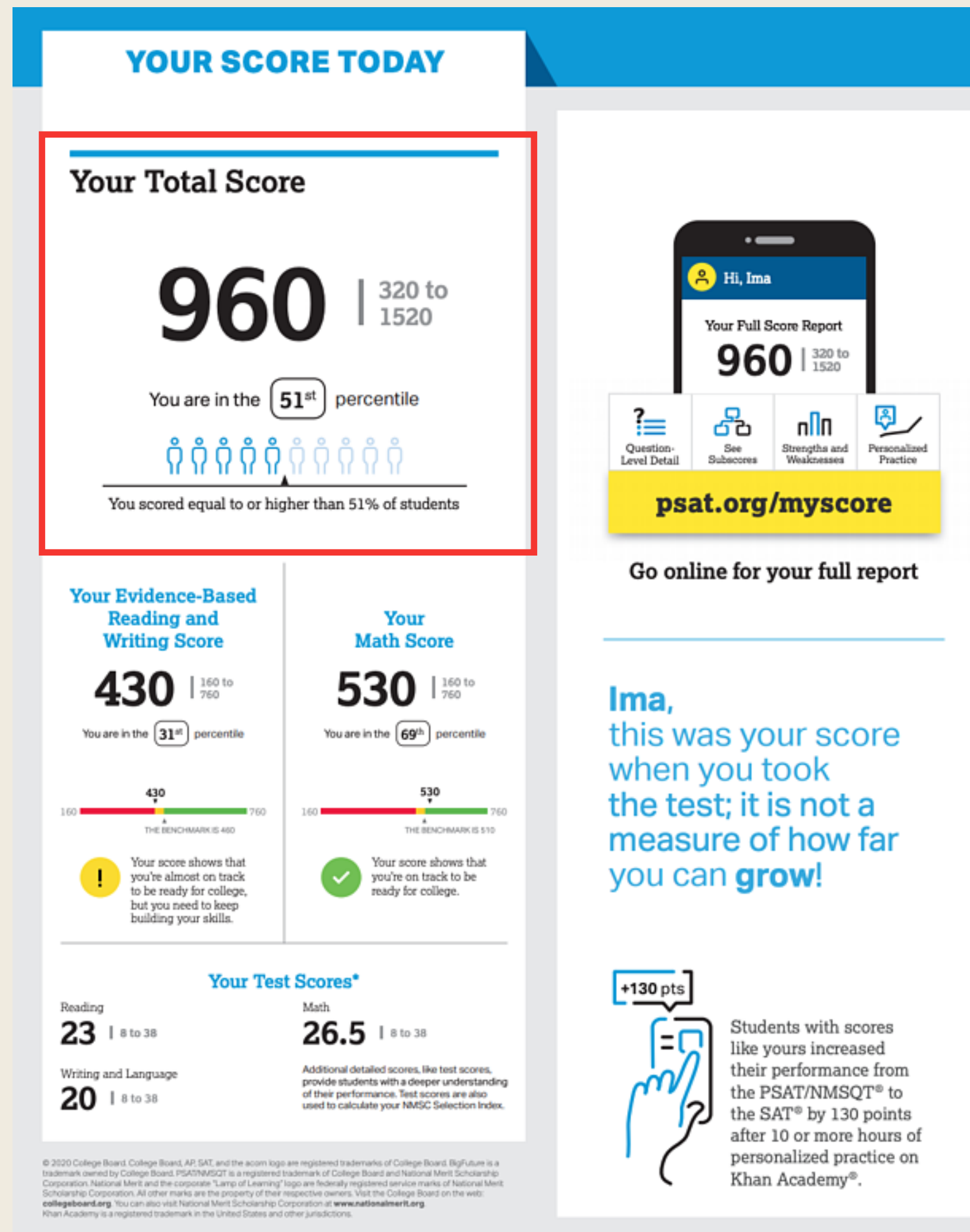
PSAT Score Report



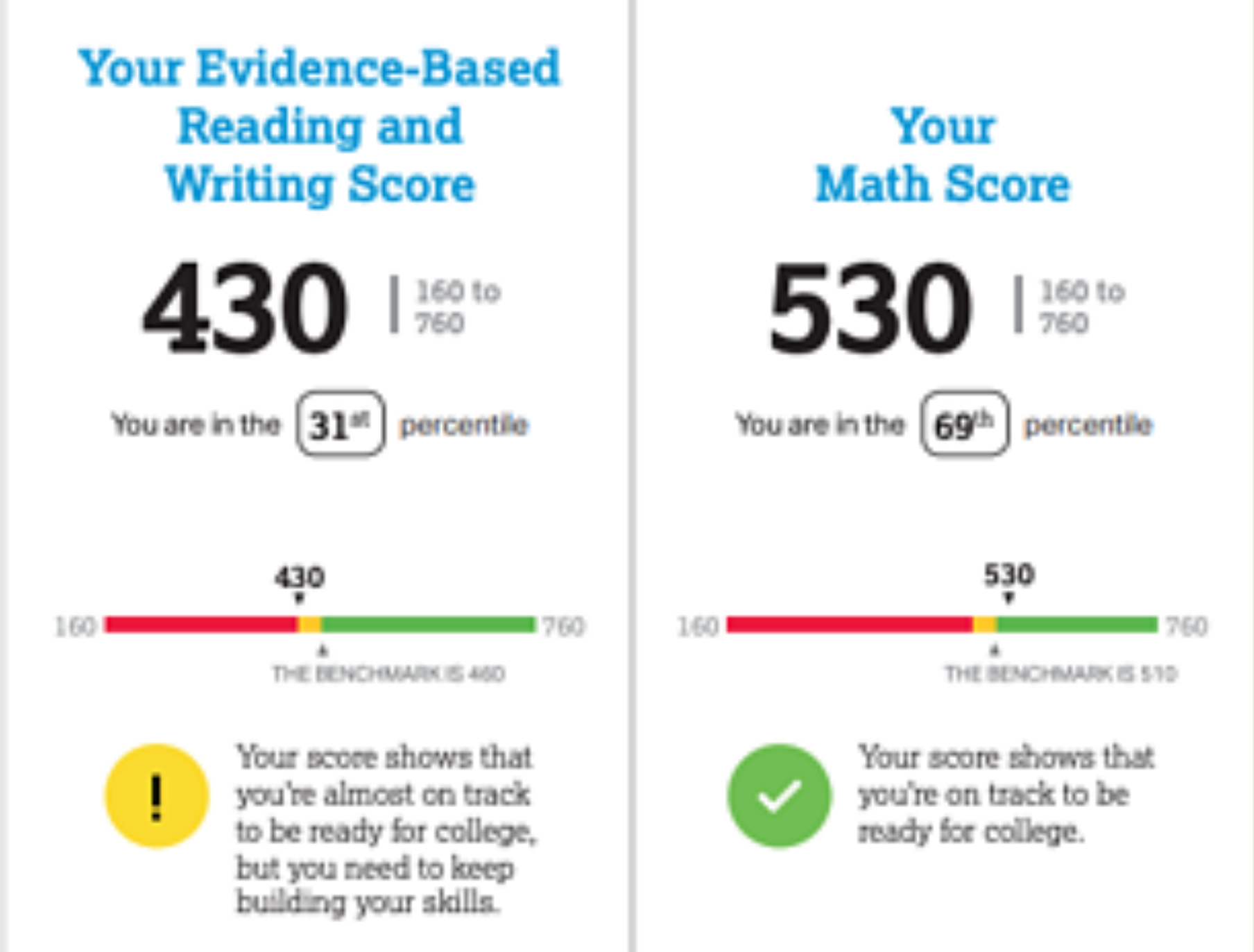
PSAT Score Report

Total Score

On a scale of
320 – 1520

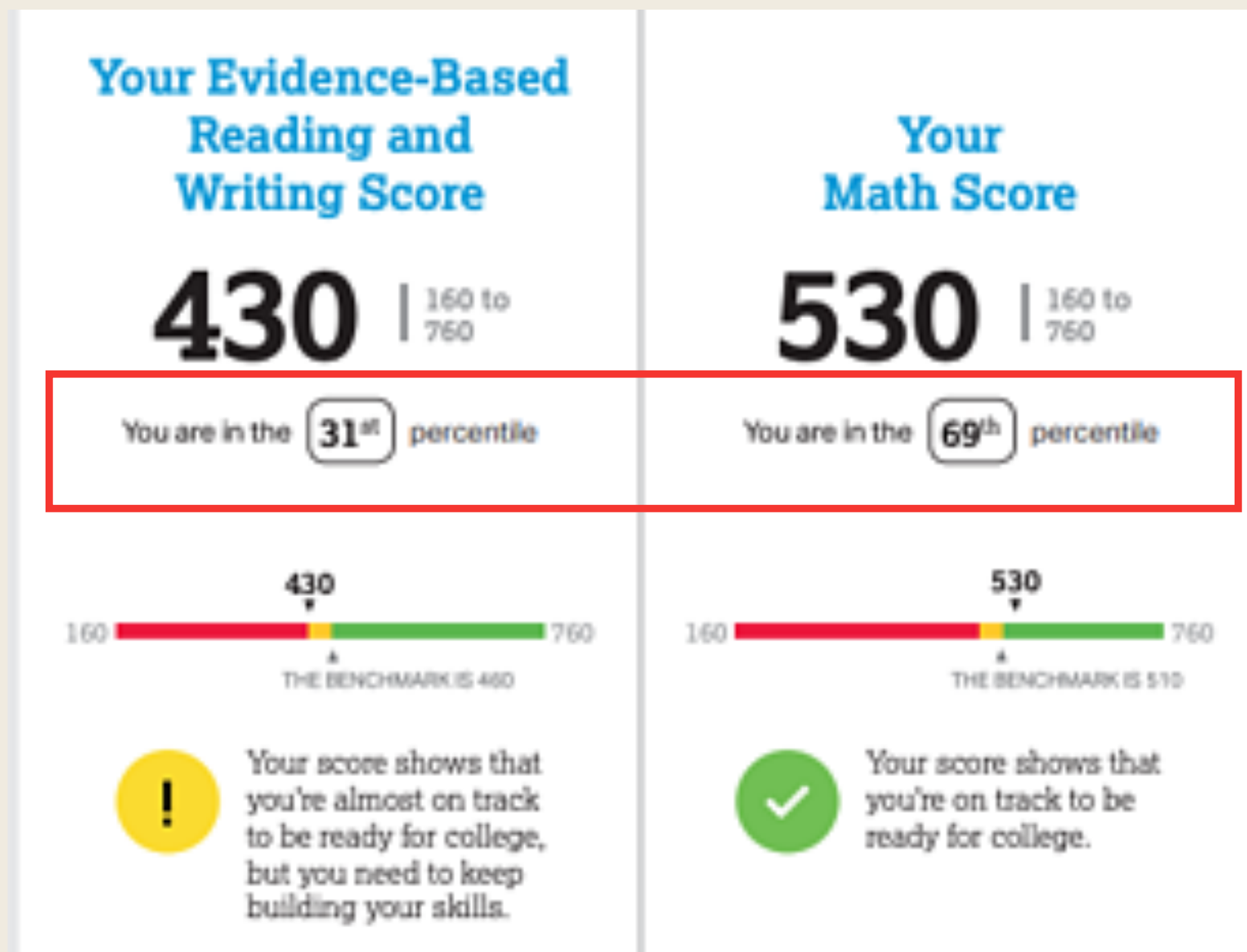


PSAT Score Report



Verbal (Evidence-Based Reading and Writing)	Math
Scale: 160 - 760	Scale: 160 - 760
Combines results from Reading and Writing	Combines results from both Math sections

PSAT Score Report



Percentiles

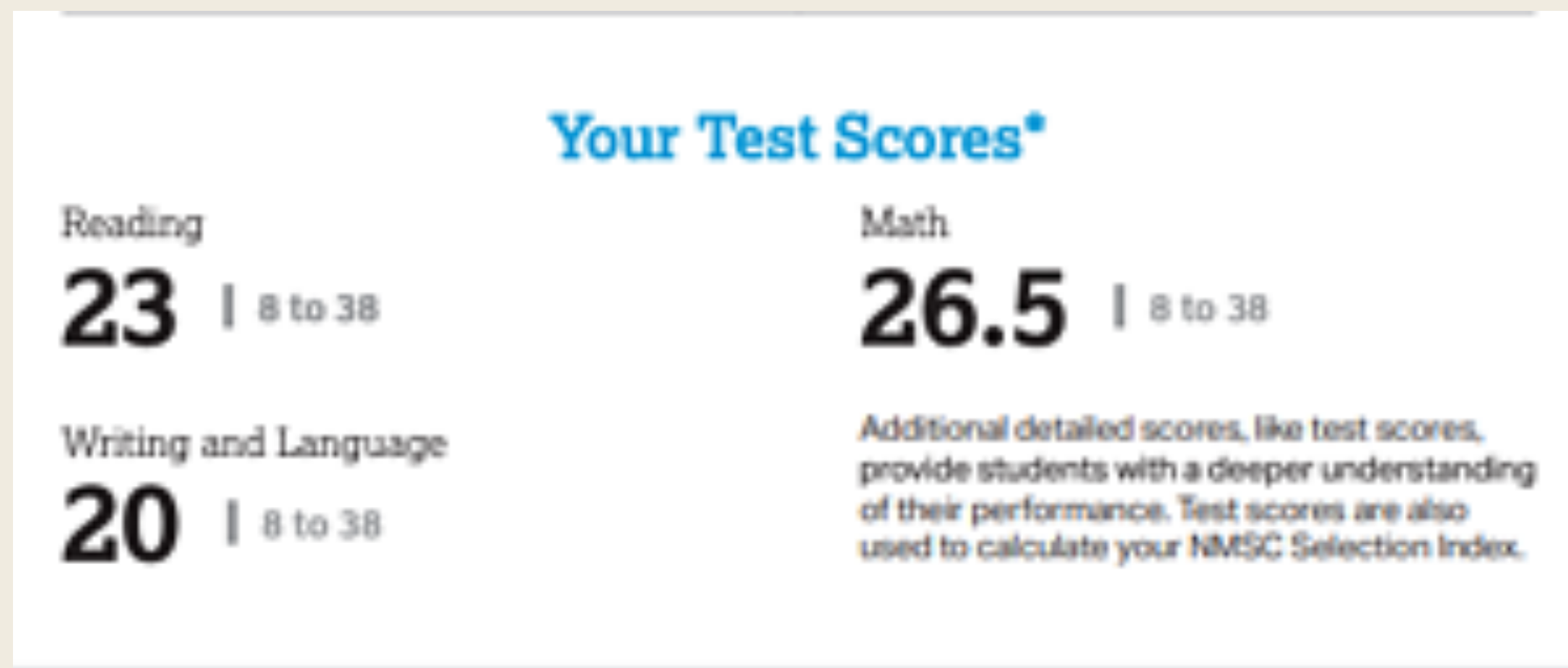
- 9th and 10th graders together; 11th graders together
- Nationally Representative percentiles listed on the report
- User percentiles online

PSAT Score Report

$(\text{Reading} + \text{Writing}) * 10 = \text{Verbal score}$

Is Reading or Writing stronger?

$(\text{Math} * 2 * 10) = \text{Math score}$



PSAT Score Report

$$(\text{Reading} + \text{Writing} + \text{Math}) * 2 = \text{Selection Index}$$

Example:

Reading: 23

Writing: 20

Math: 26.5

Total of the above = 69.5

$69.5 * 2 = 139$ Selection Index



Your NMSC Selection Index

139

NMSC® uses a Selection Index score based on PSAT/NMSQT scores as an initial screen of students who enter its scholarship programs. The Selection Index score is double the sum of your Reading, Writing and Language, and Math Test scores.

PSAT Score Report

For students in National Merit Commended or Semifinalist range, the qualifying scores from Class of 2022 were:

- Commended – 207 (set on a national basis)
 - Range over last 5 years: 207 - 212
- Semifinalist – 220 (set on a state-by-state basis)
 - Range over last 5 years: 219 - 221

PSAT Score Report

- PSAT scores are NOT reported to colleges. For most students, they only serve as a great resource to indicate what areas need work for the SAT.
- The test is aimed at 11th graders, particularly in math. The math test is heavily focused on algebra up through Algebra II. Ninth and 10th graders need to remember that they will cover that material in time.
- Students' scores on spring SATs go up more often than down. Relatively lower SAT scores show larger gains.

Question Feedback

Your Question-Level Feedback

QUESTIONS OVERVIEW

The questions in your score report may not be in the same order as you saw on test day.

READING

47
Total Questions

21
Correct Answers

25
Incorrect Answers

1
Omitted Answers

WRITING AND LANGUAGE

44
Total Questions

17
Correct Answers

26
Incorrect Answers

1
Omitted Answers

MATH – CALCULATOR

31
Total Questions

15
Correct Answers

14
Incorrect Answers

2
Omitted Answers

MATH – NO CALCULATOR

17
Total Questions

10
Correct Answers

7
Incorrect Answers

0
Omitted Answers

*Tip: A great way to start improving: check out the easy questions you missed first.

KEY

- ✓ Correct
- ✗ Omitted
- U Unscorable
- X Multi-Grid/Incorrect

- Easy Question
- Medium Question
- Hard Question
- Easy Question Missed*

READING

Question #	Correct	Your Answer	Difficulty
1	A	✓	■
2	B	✗	■
3	B	✓	■
4	B	✗	■
5	C	✓	■
6	D	✓	■
7	B	✓	■
8	A	✓	■
9	D	✓	■
10	A	✓	■
11	D	✗	■
12	D	✗	■
13	D	✗	■
14	A	✗	■
15	C	✗	■
16	B	✗	■
17	D	✗	■
18	B	✗	■
19	A	✓	■
20	C	✓	■
21	B	✗	■
22	D	✓	■
23	B	✗	■
24	D	✓	■
25	C	✓	■
26	B	✗	■
27	B	✗	■
28	A	✗	■
29	D	✗	■
30	B	✗	■
31	D	✓	■
32	A	✓	■
33	C	✓	■
34	A	✗	■
35	A	✗	■
36	C	✗	■
37	B	✗	■
38	C	✗	■
39	C	✓	■
40	C	✓	■
41	B	✓	■
42	B	✓	■
43	A	✗	■
44	A	✓	■
45	A	✗	■
46	D	✗	■
47	C	✗	■

WRITING AND LANGUAGE

Question #	Correct	Your Answer	Difficulty
1	D	✗	■
2	B	✓	■
3	C	✗	■
4	C	✗	■
5	B	✗	■
6	B	✗	■
7	A	✗	■
8	B	✗	■
9	A	✗	■
10	D	✓	■
11	D	✓	■
12	B	✓	■
13	C	✓	■
14	C	✗	■
15	D	✓	■
16	B	✗	■
17	B	✗	■
18	A	✓	■
19	B	✓	■
20	C	✗	■
21	A	✓	■
22	A	✗	■
23	C	✗	■
24	D	✗	■
25	C	✗	■
26	A	✓	■
27	A	✗	■
28	B	✓	■
29	D	✗	■
30	C	✗	■
31	D	✓	■
32	B	✓	■
33	D	✓	■
34	D	✗	■
35	D	✓	■
36	B	✗	■
37	C	✗	■
38	A	✓	■
39	C	✓	■
40	D	✗	■
41	D	✗	■
42	A	✗	■
43	C	✗	■
44	B	✗	■

MATH – CALCULATOR

Question #	Correct	Your Answer	Difficulty
1	B	✓	■
2	A	✓	■
3	B	✓	■
4	D	✓	■
5	B	✗	■
6	A	✓	■
7	B	✓	■
8	C	✗	■
9	A	✓	■
10	D	✓	■
11	D	✓	■
12	A	✓	■
13	B	✓	■
14	C	✓	■

Question #	Correct	Your Answer	Difficulty
28	85	60	■
29	0, 12	2	■
30	1368	9	■
31	85	75	■

MATH – NO CALCULATOR

Question #	Correct	Your Answer	Difficulty
1	D	✓	■
2	A	✓	■
3	B	✓	■
4	C	✗	■
5	C	✓	■
6	B	✓	■
7	A	✓	■

Question #	Correct	Your Answer	Difficulty
14	2	0	■
15	90	80	■
16	1	2	■
17	0	✓	■

psat.org/myscore

Go online for your full report

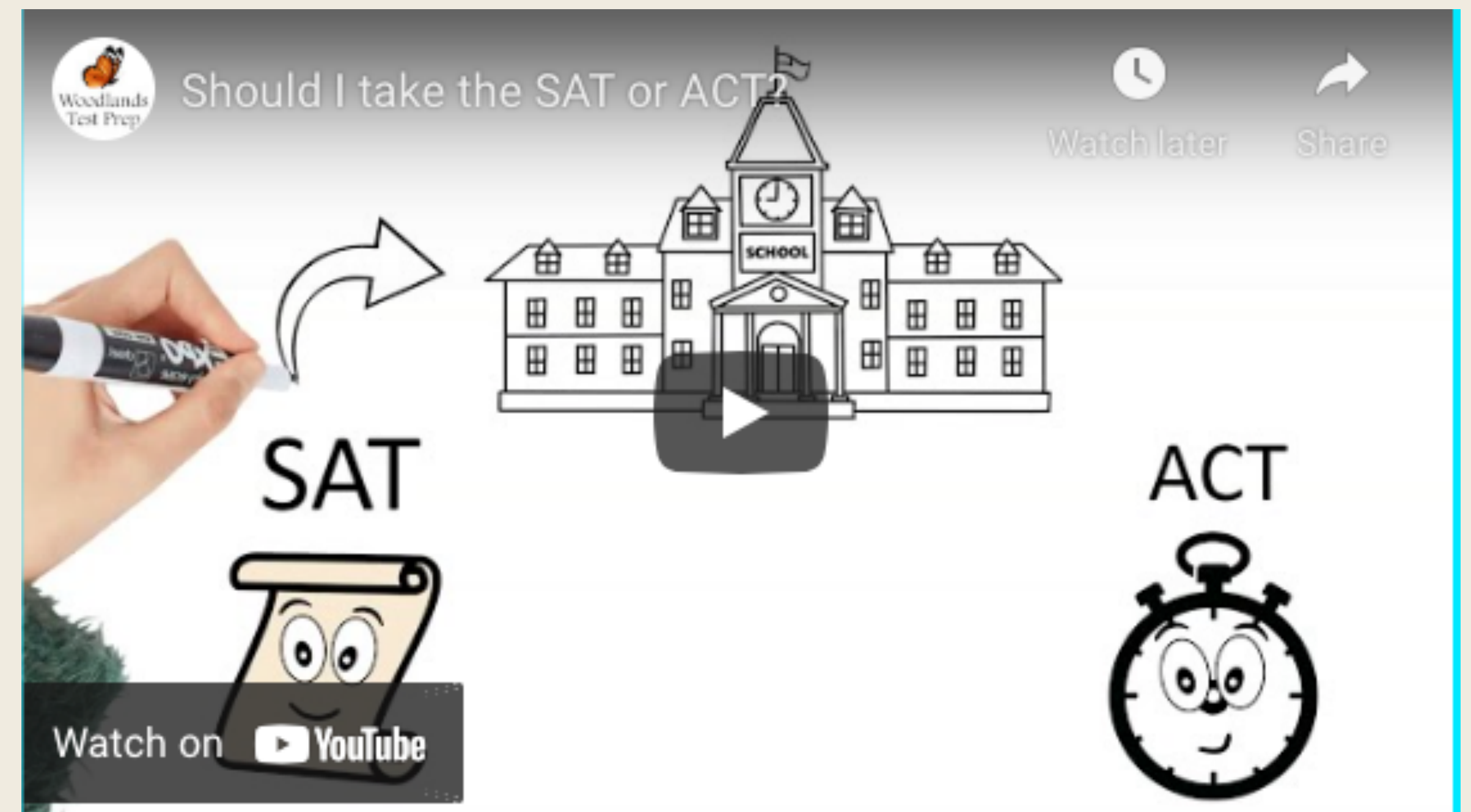
Ima B. Student 2021, 11th Grade

01102-190

- Log in to the student's College Board account to access more resources
- Look at the questions right and wrong to see what types of questions are strengths and weaknesses
- Connect to Khan Academy for free and excellent practice geared to the student

SAT vs. ACT – Which one is right for me?

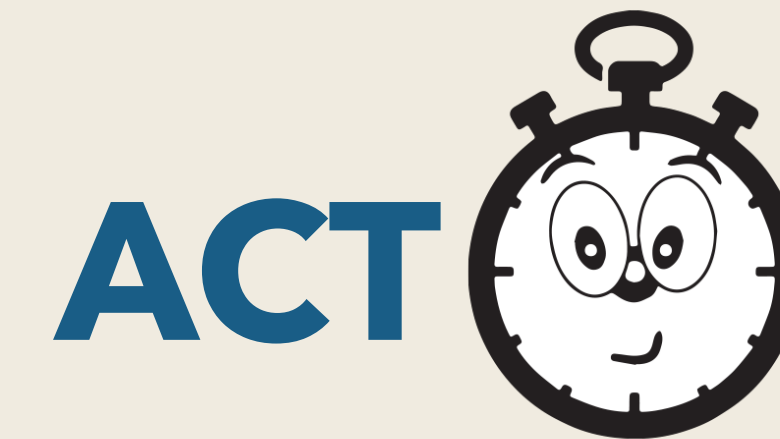
- All colleges accept either test. You have choices!
- You can choose to focus on only one test.
- Each test has a “personality.”
- Each student’s processing style, strengths, and weaknesses create preferences for one test or the other.



SAT vs. ACT – Which one is right for me?



- Just like PSAT, only slightly longer
- More time per question
- Tons of words in every section – even math!
- Focused math: almost all algebra and data analysis
- Data analysis across 3 sections is easier
- Extended time is easier to get approved



- 4 sections: English, Math, Reading, Science
- Much faster paced
- Straightforward; easier reading level overall
- Math covers broader range of topics – there's geometry!
- Science section calls for more rigorous data analysis than SAT

SAT vs. ACT – Which one is right for me?

- To decide which one is better, compare ACT score with either SAT score (best) or PSAT score (good).
- Take a full-length official practice test at home to get a baseline score. No need to take on the record!
- Compare scores using College Board tables (ACT vs. SAT) or Woodlands Test Prep tables (ACT vs. PSAT).

When should I take the SAT/ACT?

Things to Consider

- Math level - Both tests cover Algebra II. Fall testing is ok if the student has already taken Algebra II. Spring testing is recommended if taking Algebra II in 11th grade.
- AP classes - SAT May date is right before AP testing begins.
- Extra-curricular activities - When is crunch time? When can extra prep time be absorbed?
- Early decision / admission deadlines - For senior year, how many test dates will be available for re-taking the target test?
- Remember - Most students take their chosen test at least twice and often three times. Make sure to allow time.

Testing Calendar

SAT Test Dates 2021 - 2022

August 28, 2021

October 2, 2021*

November 6, 2021

December 4, 2021

March 12, 2022*

May 7, 2022*

June 4, 2022

ACT Test Dates 2021 - 2022

September 11, 2021

October 23, 2021

December 11, 2021*

February 12, 2021

April 2, 2022*

June 11, 2022*

July 16, 2022

Test Prep Strategies – “Pro Tips”

- Consider how the student learns best and his or her realistic motivation level
 - In a group or class
 - One on one tutoring
 - Independently – books or videos
- Prep before taking a test “on the record”
- Try to take the first time when the test booklet (actual questions) is available (*)
 - SAT: October, March, or May
 - ACT: December, April, or June

What's Test Optional?

- The cancellation of most of the testing opportunities for the class of 2021 led to a large increase in colleges offering a test optional policy.
- Test optional means you can choose to not send a score and let the rest of your application stand on its own for admission.
- Test optional policies made popular colleges even more so, lowering admission rates.
- Test scores will be more important for the class of 2022 - and much more important for the class of 2023 - than they were for the class of 2021. Scores are required for many scholarships.
- The data that has been released shows a greater likelihood of admission with a test score. This is part cause and part correlation.
- Submitting a test score shows more intent to enroll to college admissions readers.
- Consider what other students from your school and community will be offering in their applications.

Test Prep Strategies - “Pro Tips”

Check out your target scores at schools you’re interested in

- College Board website
- School website (Naviance or Family Connection)
- Guidebooks

Useful Links

- College Board (SAT): <https://collegereadiness.collegeboard.org/sat>
- ACT, Inc.: <http://www.act.org/content/act/en/products-and-services/the-act/registration-information.html>
- ACT vs. P/SAT Overview: <https://www.woodlandstestprep.com/act-vs--sat>
- Woodlands Test Prep YouTube Channel with answers to your questions: <https://www.youtube.com/channel/UCUujvvwsC5FPoI0Fbz-bcsg>